

ABOUT SGVU



We are a research driven university accredited with 'A' grade by NAAC (National Assessment & Accreditation Council) UGC, with a score of 3.10 on a scale of 4. The university stands proudly in the prestigious National Institutional Ranking Framework NIRF 2021, 2022 with a rank band 151-200 among the 1000 peers in the country. Our Agriculture programs have been designed & fine-tuned to meet the needs of the ever dynamic ever growing market- industry domain. With special emphasis on innovation, entrepreneurship, co- learning, multi-disciplinary research, & co-creation we are committed to the cause of a brighter future.

250⁺



FACULTIES

5000⁺



STUDENTS

20000⁺



ALUMNI

20⁺



COUNTRIES



Ranking | Approval | Recognitions | Accreditation



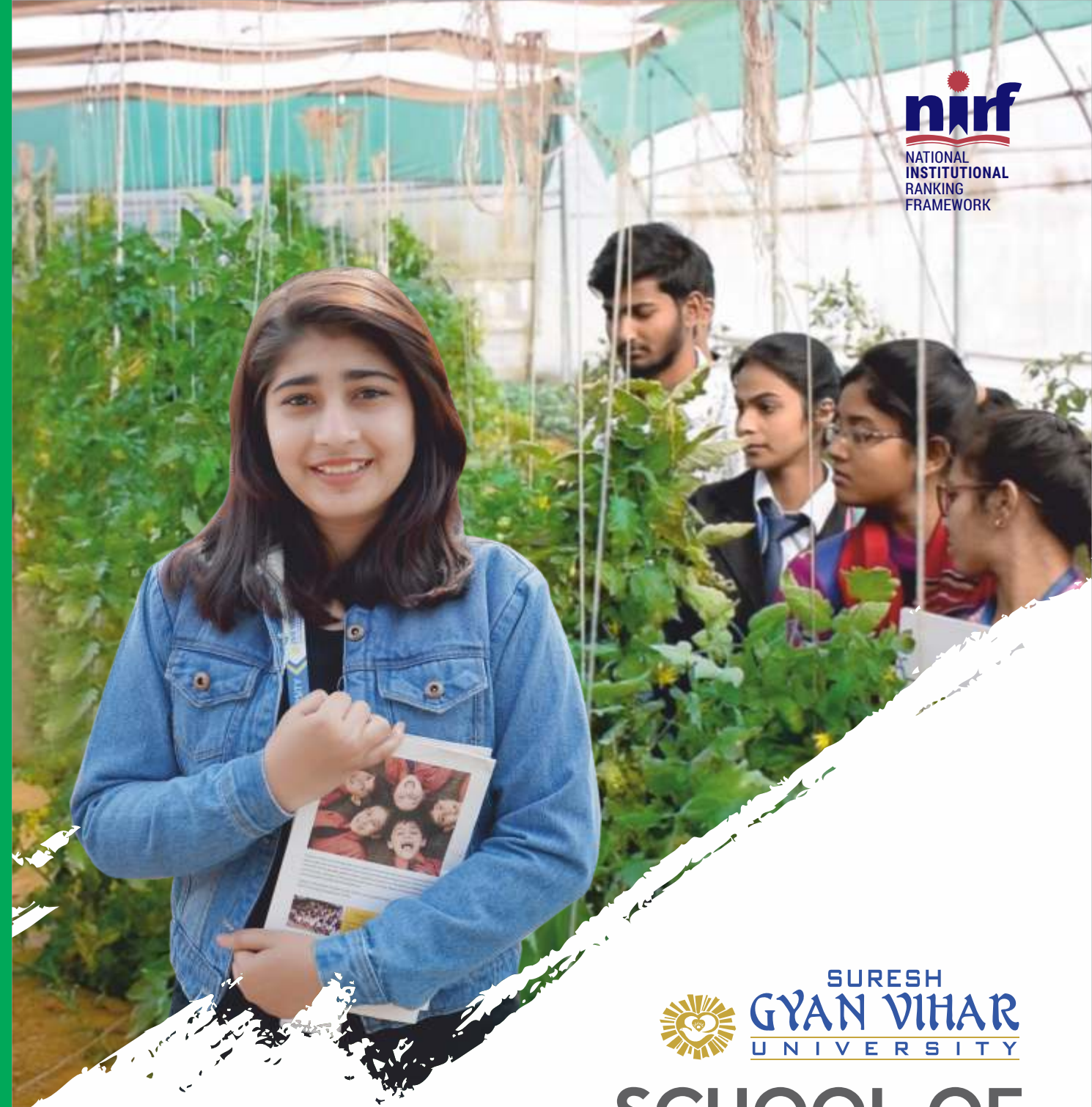
Connect with us:

We focus on Student satisfaction and accessibility.
All queries, feedbacks, ideas and opinions are welcome.

Mahal, Jagatpura, Jaipur-302017 Rajasthan (India)

+91-9256556799, 8619557465 www.gyanvihar.org | admissions@mygyanvihar.com

[f sureshgyanviharuniversityjaipur](https://www.facebook.com/sureshgyanviharuniversityjaipur) [suresh gyan vihar university jaipur](https://www.youtube.com/channel/UCsureshgyanviharuniversityjaipur)



SCHOOL OF AGRICULTURE

First and only private University in Rajasthan with ICAR accredited School of Agriculture



'We Feed the World,'

India is an agrarian society and has always regarded agriculture as the back-bone of her economy. Farmers still remain in the impoverished sectors of economy. Gyan Vihar leads a mission towards transforming agriculture through technology. SGVU has the largest agriculture research lab in the country focussed on hydroponics, genetics, polyhouse and integrated farming technologies.

ABOUT GYANVIHAR SCHOOL OF AGRICULTURE

Gyan Vihar School of Agriculture was established in the year 2015, with an objective to prepare professionally competent manpower in the field of Agriculture and Allied Sciences.



First and only private University in Rajasthan with ICAR accredited School of Agriculture

School of Agriculture at Suresh Gyan Vihar University plays the role of providing the knowledge of agriculture to its students in an exceptional manner that completely changes the research and significant service. We assist by providing the skills necessary to develop farms in order to support the growing population and economy. Hence, we gladly welcome your presence to be a part of our School of Agriculture. Excellence is our culture, here we create an influencing atmosphere that exclusively permits the students, staff and faculty members to attain their maximum in every sector. Eventually, the mark that agricultural education will make on the development of our country are essential by opening new possibilities and employment opportunities resulting in enhanced living standards and a better work environment. School of Agriculture also focuses on developing its academic relations globally through the extension activities.

OUR SALIENT FEATURES



GLOBAL LINKAGES

Key Stats



One of the Largest Hydroponic and Integrated Farming Research Facility in India

Farmers in India struggle to find stability because of unproductive soil, limited per capita farm land and unpredictability in weather. Gyan Vihar is finding solution through:

- ▶ Hydroponics: Soil-less farming to fight with unproductively
- ▶ Poly-house: Controlled atmosphere in an affordable structure
- ▶ Integrated Farming: Hourly reporting with Sensors and Internet of things
- ▶ Seed Genetics: One of the largest Bio-Tech Lab in Rajasthan



OUR CONNECTIONS WITH CORPORATE

- With KVK's of different States, CIMMYT and ICRISAT
- Lima Grain, Hyderabad (Students placed for RAWE)
- Holy Drops Organic Farms Ltd., Jaipur
- Biostadt India Ltd.
- VNR Seeds, Raipur
- Dhanuka Agritech Ltd.
- Manesh Agro Engineering & Technology
- Indian Society of Genetics, Biotechnology Research Development
- New ERA Research Foundation
- Natural Health Care
- Farmer Research & Development Society
- Rudrashivam Dairy and Agri Research
- Unnati Research Foundation
- Raj Agro Seed Corporation Ltd.
- Peasant Agriscience Pvt. Ltd.
- Aruti Agritech India Pvt. Ltd.
- Bestec Seed Pvt. Ltd.

OUR CENTRE FOR AGRICULTURAL RESEARCH

15 acres of agricultural research farm with best facilities like:

- Poly-house
- Goatery unit
- Green House & Nursery
- Vermicompost unit
- Poly-pond and Fisheries unit
- Modern Irrigation facility
- Agricultural Technology Information centre
- Farm operation service unit
- Khet khaliyan pathshala
- Mushroom production unit
- Seed processing unit
- Organic vegetable park
- Hydroponics: The only lab of its kind among all Agricultural universities in Rajasthan
- Poultry Farm
- Livestock unit
- Azolla unit
- Pearl Culture

PROGRAM OFFERED

UNDER GRADUATE

- B.Sc. (Hons.) Agriculture
- B.Sc. (Hons.) Agri Business Management
- B.Tech Agriculture Engineering

POST GRADUATE

- M.Sc. (Ag.) Agronomy
- M.Sc. (Horticulture) Fruit Science
- M.Sc. (Horticulture) Vegetable Science
- M.Sc. (Ag.) Genetics and Plant Breeding
- M.Sc. (Ag.) Soil Science

RESEARCH

- Ph.D. in Agriculture

OUR STRIKING ATTRACTION POINTS

- Training of manpower with more practical orientation to cater to the needs of public, private and corporate sectors in agriculture
- Imparting knowledge and training in Interdisciplinary production oriented courses in agriculture
- Providing the Experiential Learning and Hands-on Training for developing Entrepreneurial skill for being Job Provider as well as Job Seekers
- NSS, Yoga & Physical Education
- Summer/Winter Internships
- Joint Academic Programs
- Joint Conferences/Seminars & Workshops
- Focus on employability & training
- On-field training for the student
- Regular education tours to various ICAR Research Institutes, Agriculture Universities and KVKs
- Focus on new technology for farming like Organic Farming
- World Class Laboratories and Research Facilities

RESEARCH CENTRE

- Centre for Climate & Physical Change Research of SGVU in located at Virasna, near Sambhar Lake, Jaipur extended over 100 acre of land.
- 30 acre Crop Production Farm
- 30 acre Crop Production Farm